

ATA CHAPTER

25 | 20 | 00

Passenger Service **On-Board Wheelchair**



PNR 2218-series • On-Board Wheelchair

The On-Board Wheelchair 2218-series sets the airliner standard for the transport of disabled passengers. Light-weight design, durability, safety, appearance, and ease of operation for the cabin crew are just some of the highlights of this design.

Flip-up type armrests allow easy transfer to the individual's passenger seat. The rear wheels have brakes incorporated which are always accessible by the accompanying person. Three belts - shoulder, leg, and foot belt - allow safe transport and transfer in the aircraft cabin.

- Highest possible comfort
- Advanced ergonomic design
- Easy handling
- Excellent manoeuvrability
- Light-weight 12 kg / 25 lbs.
- Accessible to all types of aircraft

→ In accordance with:

- EASA/FAR 25.853 flammability requirements
- SAE ARP 4120 for On-Board Wheelchairs
- Applicable EASA/FAR chapter 25



Folds to minimum size within TWO seconds



PNR 2218-series • Folded – dimensions see next page

ATA CHAPTER

**25 | 20 | 00**

Passenger Service **On-Board Wheelchair**

**Specification 2218-xx**

**UNFOLDED DIMENSION**

Length:	760 mm	29.9 in
Height:	1035 mm	40.75 in
Width:	<b>A</b> 415 mm	16.34 in
	<b>B</b> 375 mm	14.76 in
	<b>C</b> 405 mm	15.94 in
Weight max:	14,5 kg	31.9 lbs

**FOLDED DIMENSION**

Length:	890 mm	35.04 in
Width:	415 mm	16.34 in
Height:	270 mm	10.63 in

**Specification 2218-N-xx**

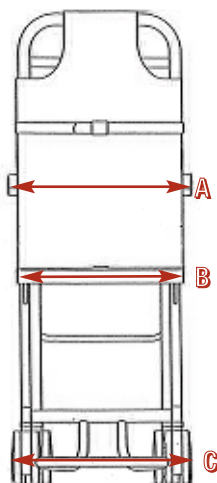
**UNFOLDED DIMENSION**

*The 2218-N-xx is 1inch smaller*

Length:	760 mm	29.9 in
Height:	1035 mm	40.75 in
Width:	<b>A</b> 385 mm	15.15 in
	<b>B</b> 345 mm	13.58 in
	<b>C</b> 375 mm	14.76 in
Weight max:	14,5 kg	31.9 lbs

**FOLDED DIMENSION**

Length:	890 mm	35.04 in
Width:	385 mm	15.15 in
Height:	270 mm	10.63 in



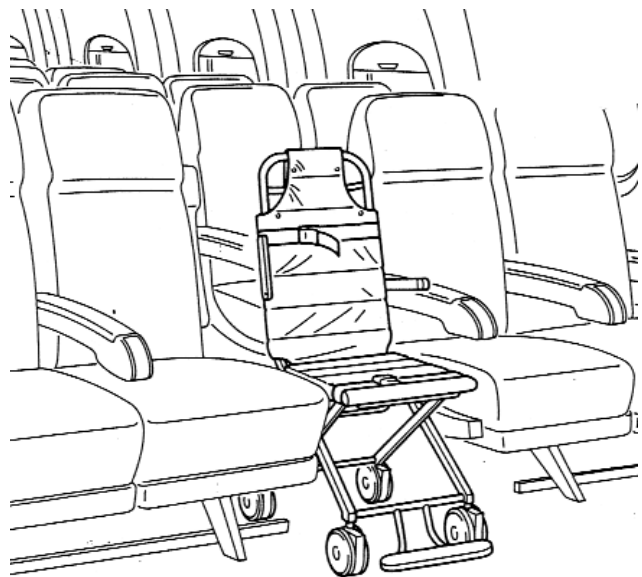
Measuring points for width

**Features Basic Version**

- Vinyl cover
- Literature pocket on seat back
- Shoulder, leg, and foot belt with velcro-type ends
- 360° swivel castors
- Foot brake on both rear wheels
- Durable stainless steel chassis
- Color of chassis, trim and finish according to customer requirements

**Options**

- Nappa leather cover
- Fabric cover
- Pax-seat-belt-buckels for leg and shoulder belt
- Foldable footrest
- Customer logo on the cover back and structure beams
- Several more options, refer to detailed brochure...



PNR 2218--series • Transfer to passenger seat requires moveable arm rests

**ATA CHAPTER**

**25 20 00**

**Passenger Service On-Board Wheelchair**

**Customers**

- |                       |                     |                    |
|-----------------------|---------------------|--------------------|
| Aeroflot              | Egypt Air           | Max Jet            |
| Aerolineas Argentinas | Elys Air            | MEA                |
| Afriqiyah Airways     | Emirates            | Neos               |
| Air Asia              | EOS Airlines        | Olympic Airways    |
| Air Astana            | Ethiopian Airlines  | Oman Air           |
| Air Austral           | Etihad              | Philippine Airl.   |
| Air Canada            | Eurofly             | PIA                |
| Air Caraibes          | Eva Air             | Qatar Airways      |
| Air China             | Finnairl            | Royal Jordanian    |
| Air Gemini            | Futura Airways      | SAUDIA             |
| Air Italy             | GOL                 | Singapore Airl.    |
| Air Madagascar        | Gulf Air            | Sichuan Airlines   |
| Air Mauritius         | Hainan Airlines     | Skyservice         |
| Airone                | Iberia              | Smartlynx Airlines |
| All Nippon Airways    | Iran Air            | Sri Lankan Airw.   |
| Austrian Airlines     | Jazeera             | TAM Airlines       |
| Atlas Air             | Jet Airways         | TAP Air Portugal   |
| Avianca               | Kingfisher Airlines | THY Turkish Airl.  |
| British Midland       | KLM                 | Thai Airways       |
| China Airlines        | Kuwait Airways      | Teague             |
| China Eastern         | LTU                 | YemeniaAir         |
| Condor                | Lufthansa           | Austral            |
| Cyprus Airways        | Luxair              | Wind Jet           |
| Czech Airlines        | Malev Airlines      | Wataniya Airways   |
|                       | Martinair           | Vietnam Airlines   |
|                       |                     | Issue: 04/10       |

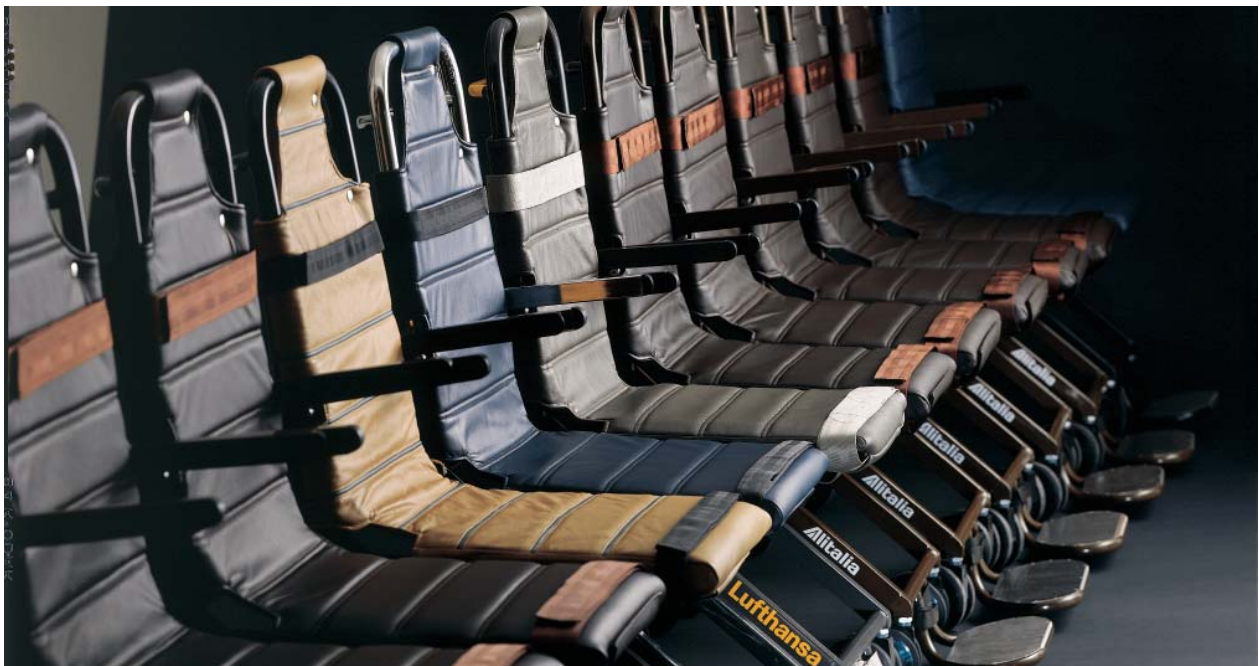
**Certification & Performance**

- OBW meets Airbus specifications
- OBWmeets Boeing D6-55441 requirements
- OBW meets SAE ARP 4120 Aerospace Recommended Practices
- All non metallic parts in accordance with: EASA/FAR 25.853 (a)
- Approved as E-TSO article

**Static load tested to:**

- Armrest: 136 kg down / 68 kg side
- Assist handle: 136 kg up/down
- Seat pan: 300 kg down
- Backrest: 90 kg down
- Footrest: 136 kg down
- Single wheel: 136 kg down

*The loads are ultimate loads and have been tested by static test in our approved test facilities.*



PNR 2218-series • Each wheelchair can be customized to fulfill each customer's unique requirements

ATA CHAPTER

25 20 00

On-Board Wheelchair Storage



PNR 5240-series • Stowage rack

Where to stow the on-board wheelchair aboard an airplane is always a big question. The best location in general is the space behind the last seat row next to the galley, lavatory, or class divider. Innovint offers several solutions.

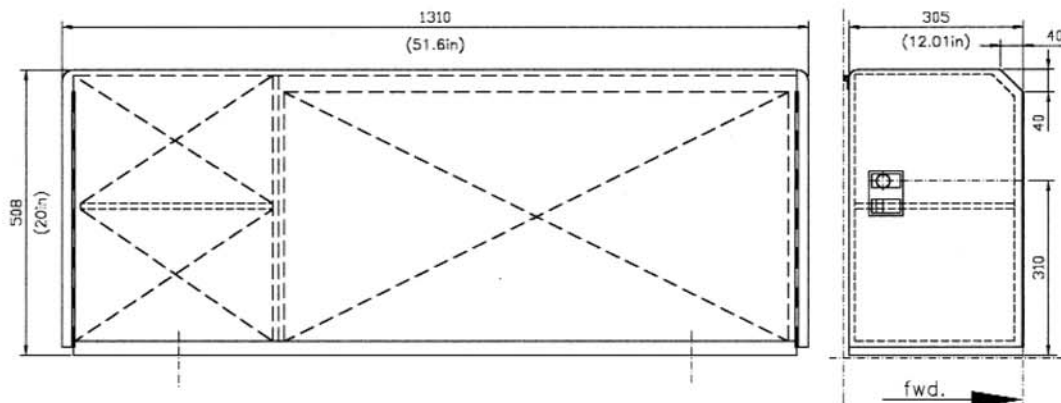
Customized according to the seat layout a stowage can be installed behind the last seat row. The stowage functions like a dog house and is available for lateral or center installation. The center stowage will have on the one side an additional compartment for miscellaneous cabin equipment.

A less cost intensive alternative is a stowage rack. The L-back shell is made of honeycomb panels and covered with a canvas cover which can be opened by a zipper. The on-board wheelchair is fastened inside with an additional belt.



Protective bag and strap assy for stowage compartments

If space can be made available in existing stowage compartments, a protective bag and strap assy for fastening can be provided.



PNR 5240-series • Center stowage for last seat row installation with compartment for miscellaneous equipment